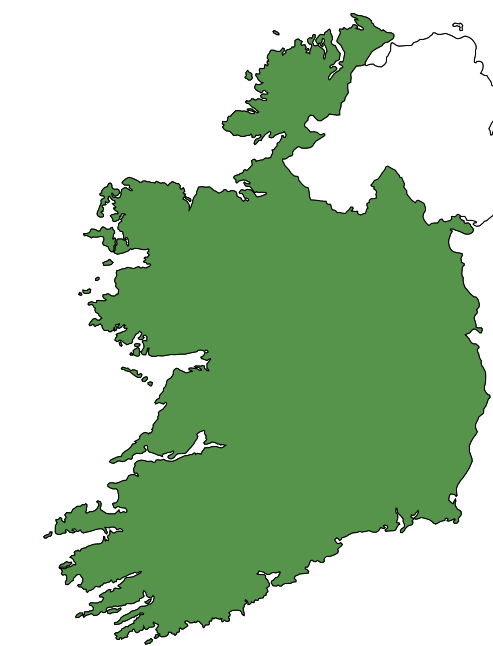




National  
Cancer  
Registry  
Ireland

# CANCER IN IRELAND

## What's the difference between sexes ?



### Most common invasive cancers

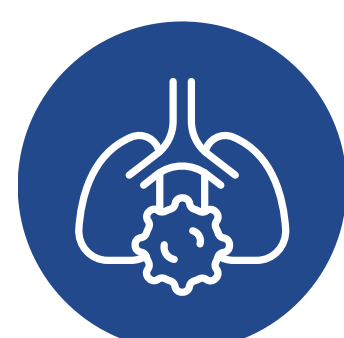
\*excl NMSC



Prostate



Colorectal



Lung

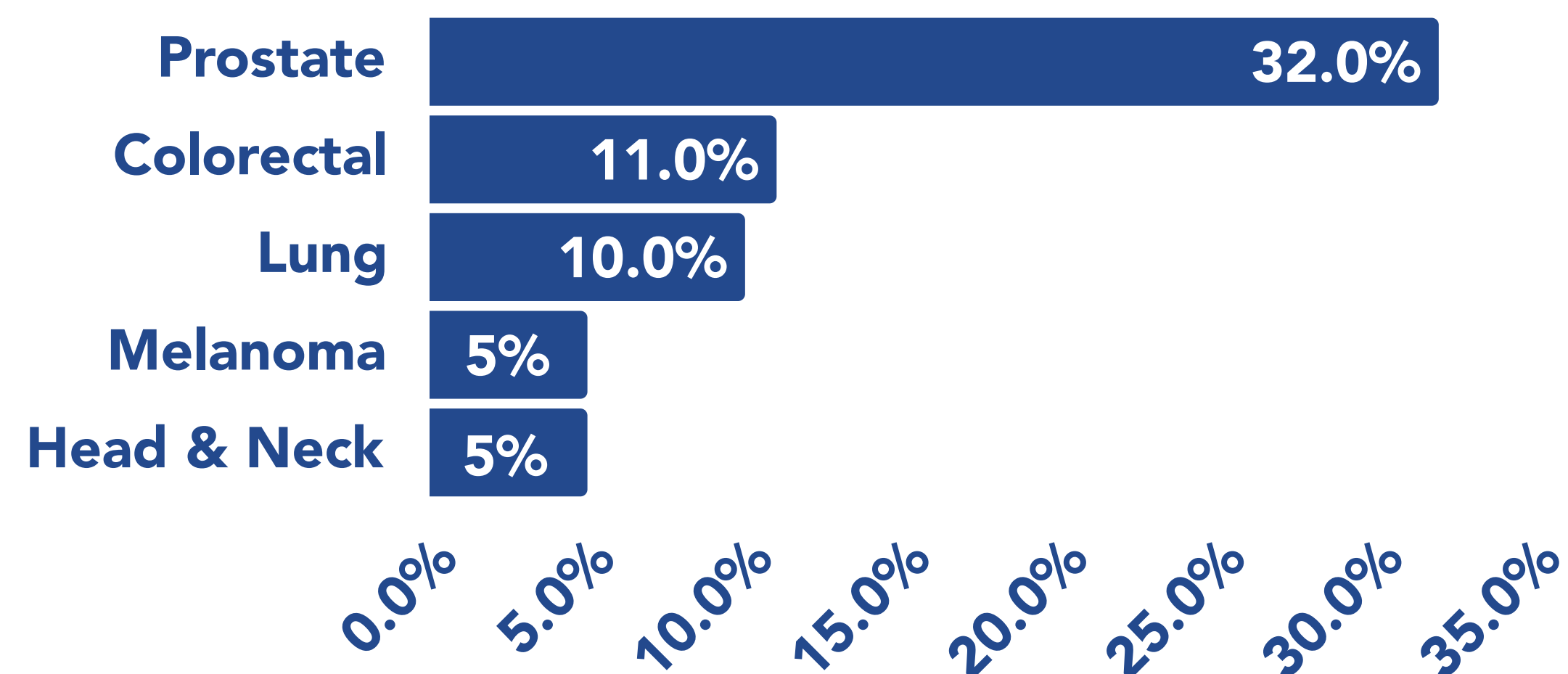


Melanoma

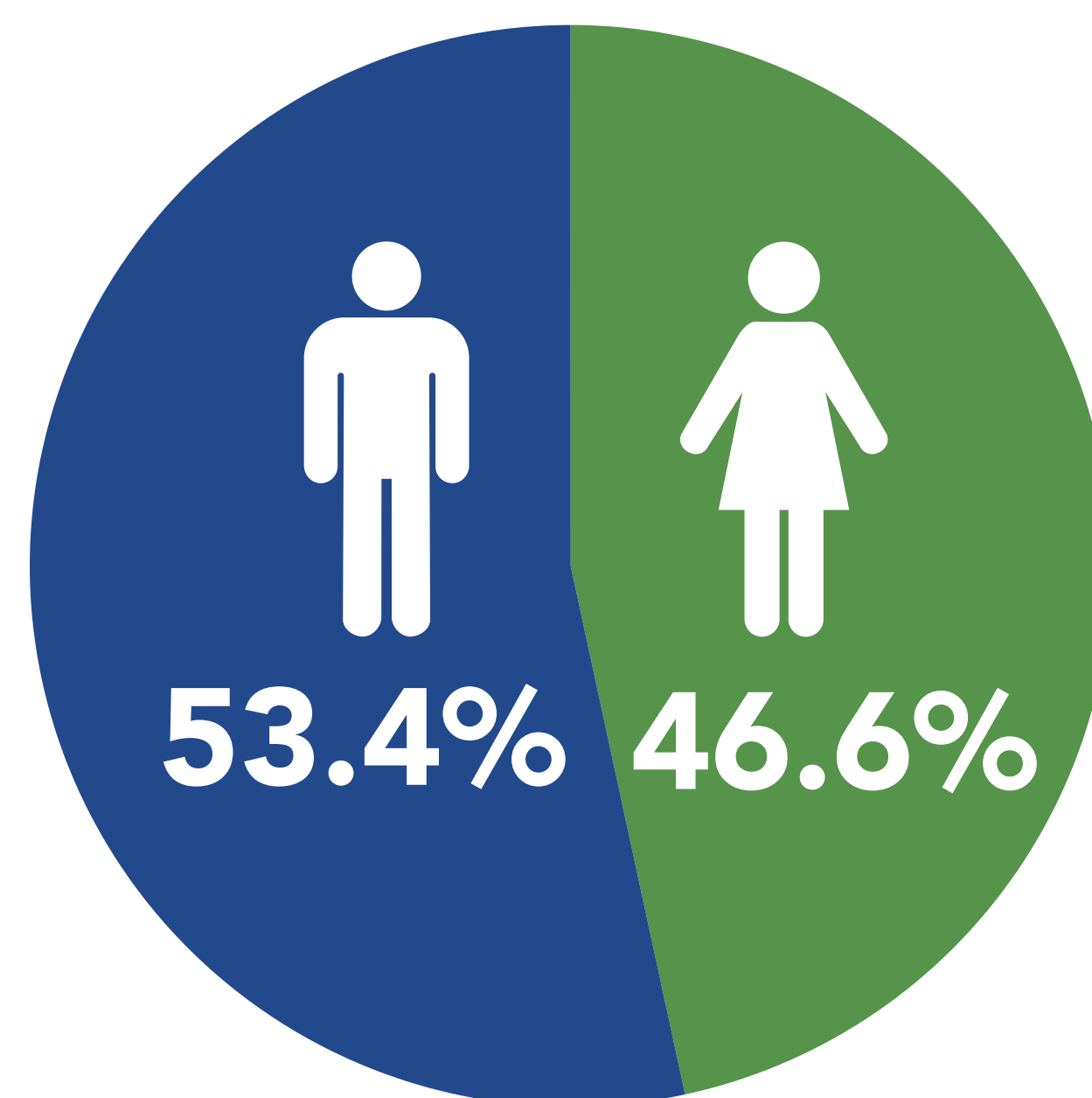


Head & Neck

### Ranking & Percentages



### Male/ Female split invasive cancer cases

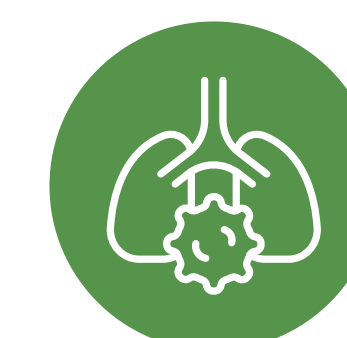


### Most common invasive cancers

\*excl NMSC



Breast



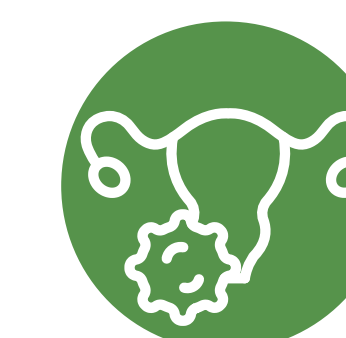
Lung



Colorectal

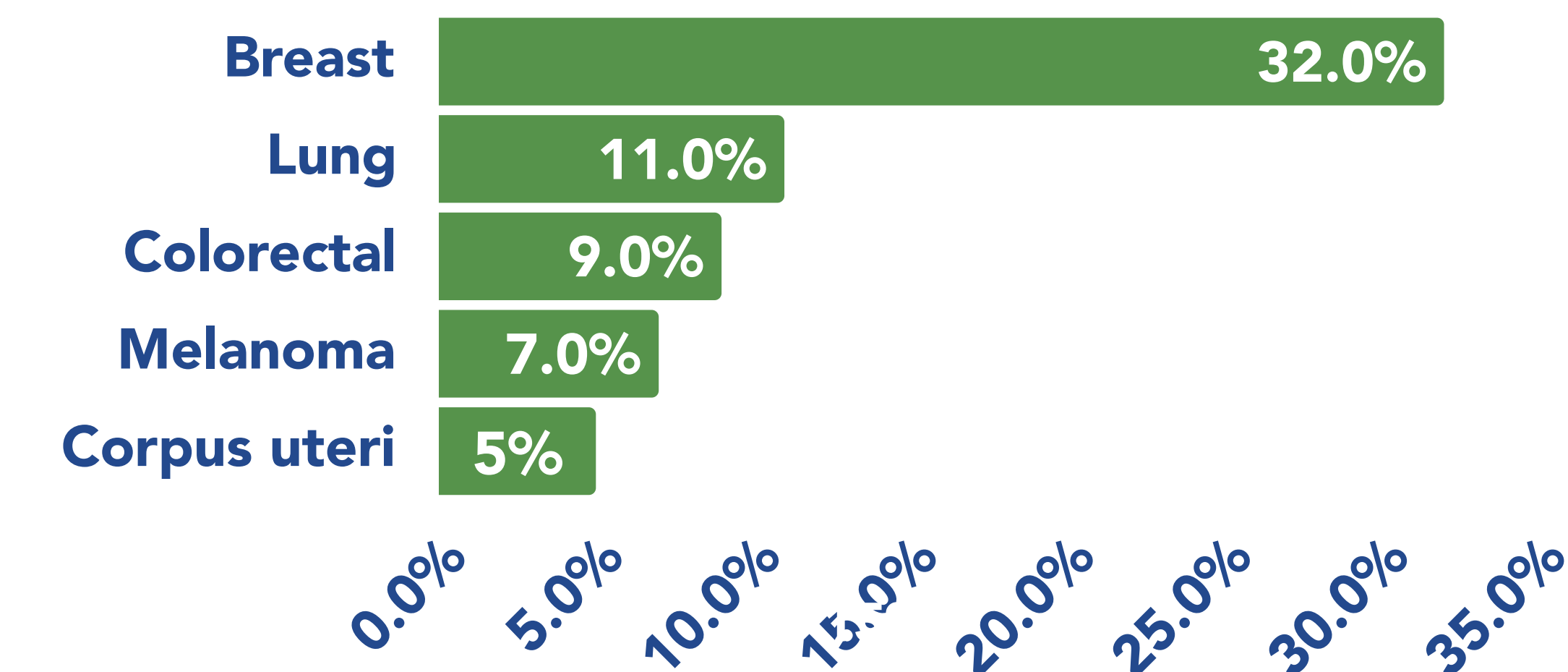


Melanoma

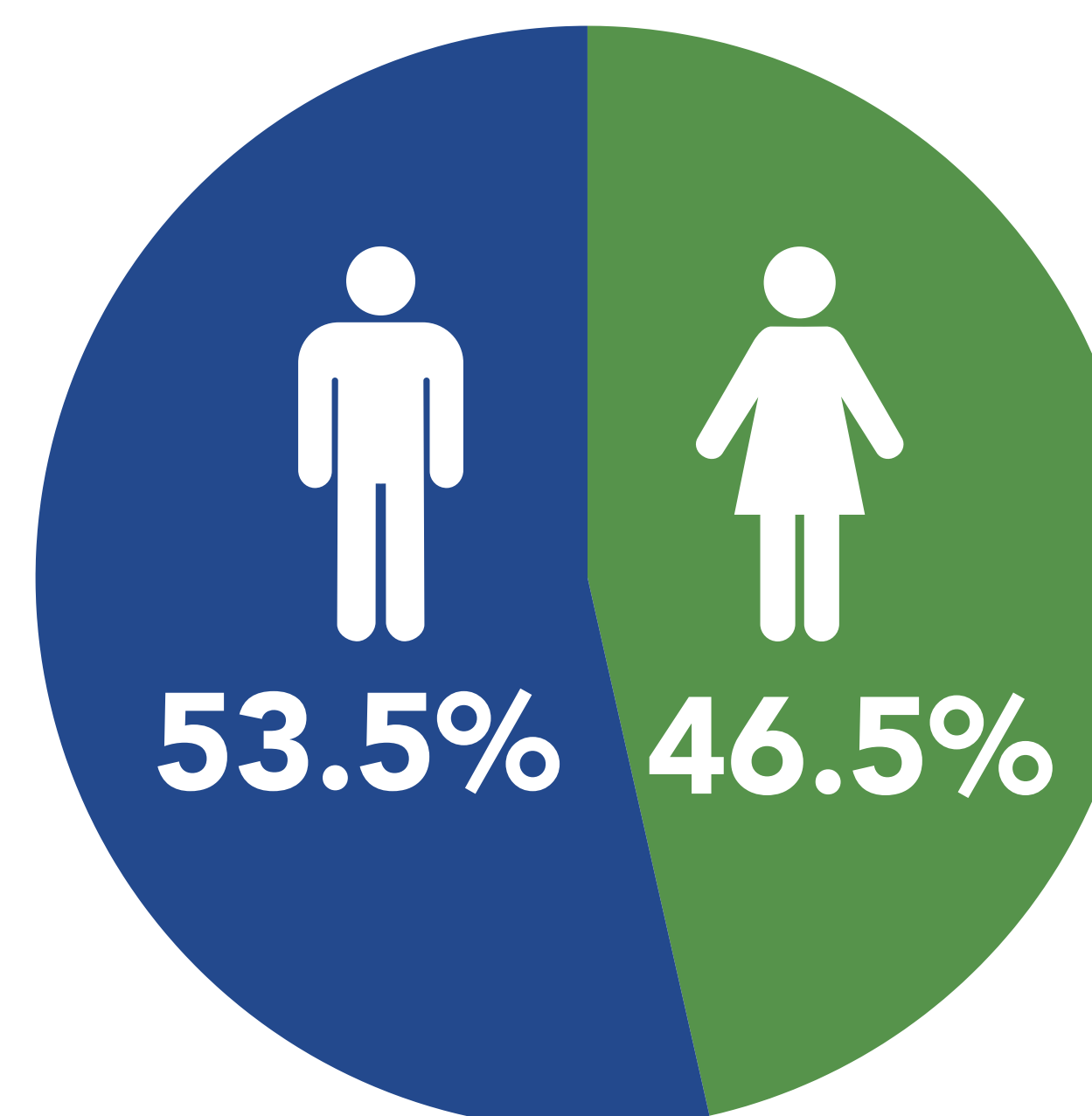


Corpus uteri

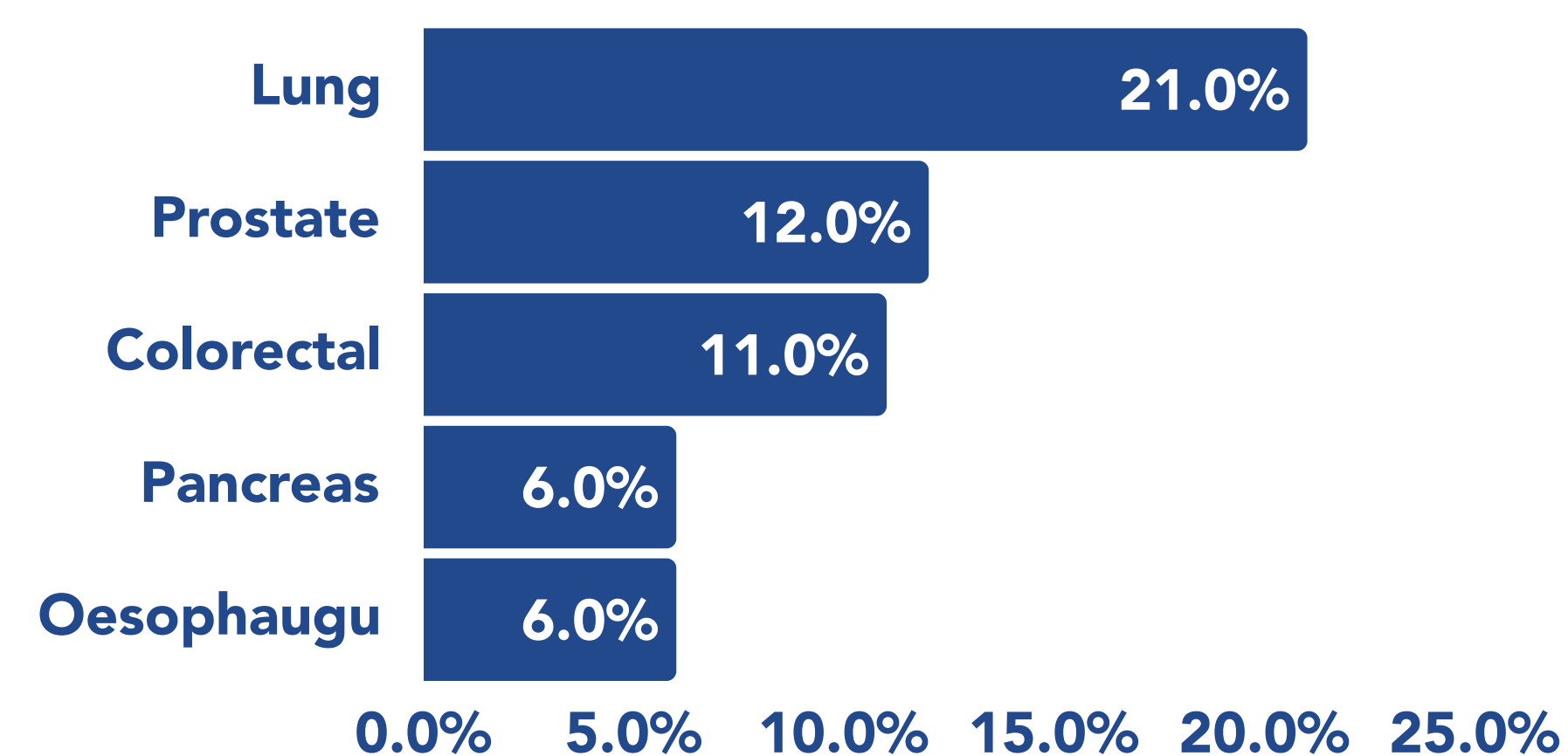
### Ranking & Percentages



### Male/ Female split cancer deaths



### Top causes of cancer death



### Top causes of cancer death

