

1 Introduction

*This preliminary report presents information on all new cancer cases (referred to as cancer incidence) and cancer deaths occurring during 1997 in Ireland. It takes a look at how the incidence varies for different cancer types through the period from 1994, when the Registry was established, to 1997, the latest complete year of data.*

*It also describes:*

- *how we compare with the rest of Europe*
- *the types of treatment commonly given*
- *the chances of survival after a diagnosis of cancer.*

2 A summary of the new cancer cases and deaths occurring in 1997

female male

Figure 1. Summary data for 1997

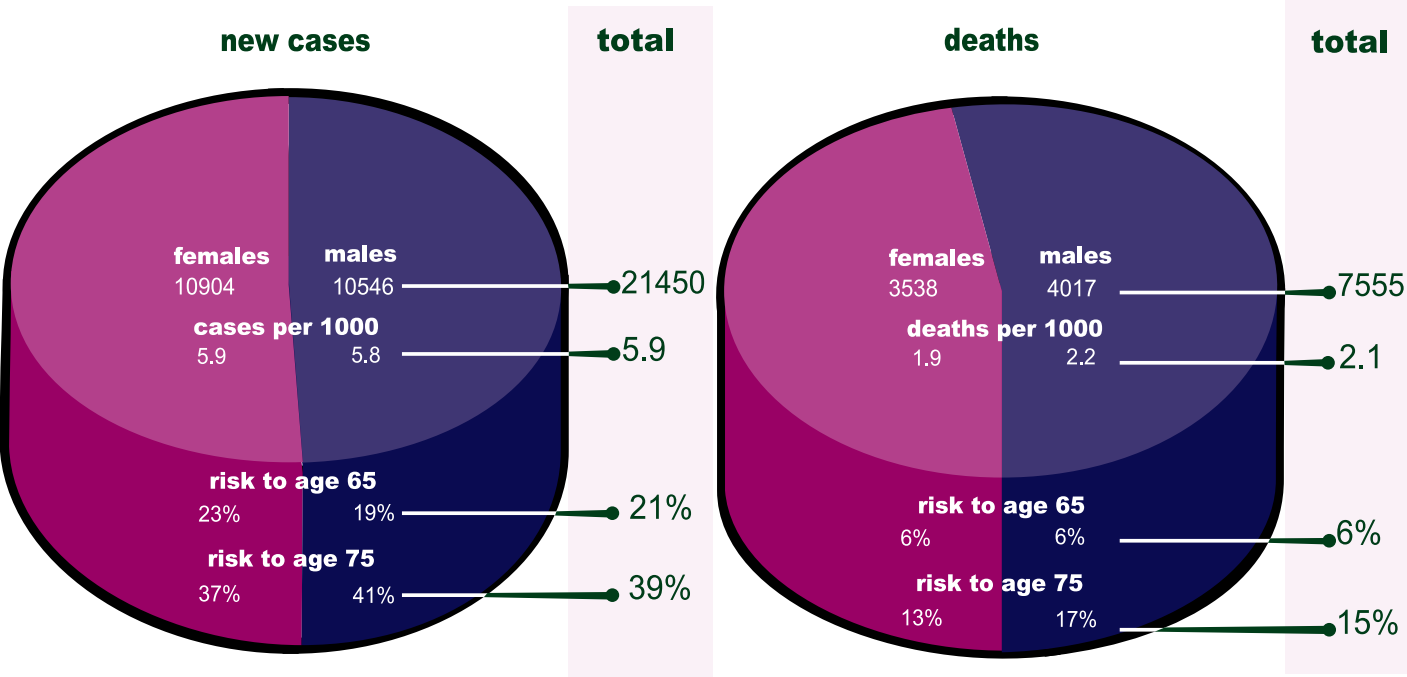


Table 1.  
Summary data for 1997

	all	females	males
cases per 1000	5.9	5.9	5.8
risk to age 65	21%	23%	19%
risk to age 75	39%	37%	41%
deaths per 1000	2.1	1.9	2.2
risk to age 65	6%	6%	6%
risk to age 75	15%	13%	17%

*'Just over 21,000 new cases of cancer were diagnosed in Ireland in 1997, with almost equal numbers for men and women.'*

Just over 21,000 new cases of cancer of all types (see pages 7 & 8 for a full list) were diagnosed in Ireland in 1997, with almost equal numbers for men and women. It can be seen that, up to the age of 65 years, for both sexes the risk is quite low, at just over 20%. However, by age 75, the risk has doubled. At age 75 men have a 41% risk of being diagnosed with cancer, women 37%.

There were 7,555 deaths from cancer in 1997. A woman had a 13% chance of dying from cancer before age 75 years while a man had a 17% chance. Men are much more likely to die of their cancer than are women.

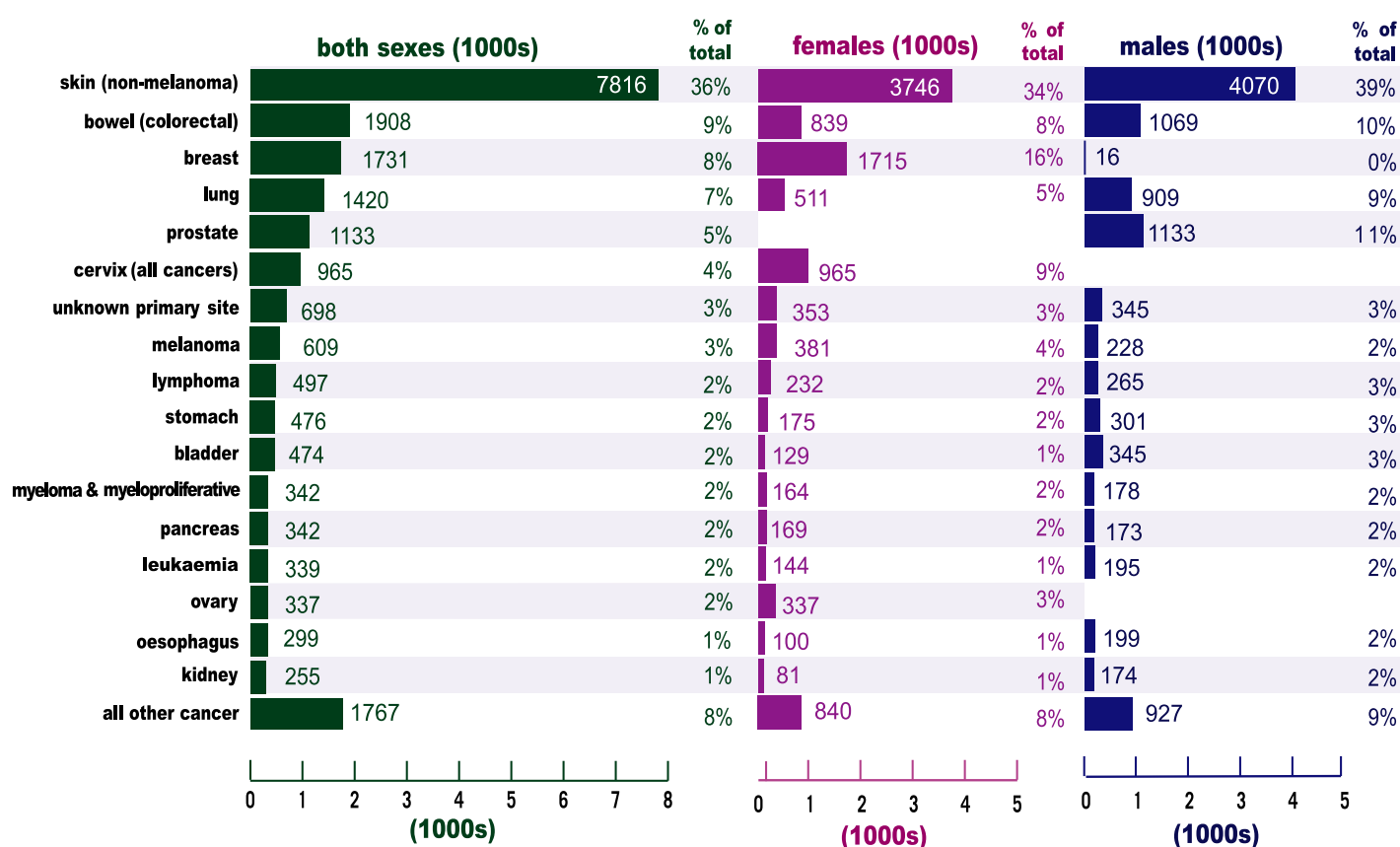
These statistics reflect the fact that cancer is, for the majority, a disease of old age, and that the cancers affecting men often have a poorer outcome than those affecting

### 3 Cancer types

Non-melanoma skin cancer was the commonest diagnosis, at just over one third of all cases (Figure 2). These skin cancers are easily treated and rarely cause death. Of the more serious cancers, bowel (colorectal) cancer, with just under 2,000 cases, was the most common. Bowel (9%), lung (7%), breast (8%) and prostate cancers (5%) accounted for 29% of the total and 45% of the non-skin cancers.

The commonest non-skin cancers in men were prostate (11%), colorectal (10%) and lung (9%) and in women breast (16%) and colorectal (8%). Although cancer of the cervix is shown in the table as being one of the commonest (9%) this figure is deceptive, as few of these "cancers" are true invasive cancer, the majority being abnormalities picked up by cervical smear tests.

**Figure 2. Cancer cases by site**



***'Non-melanoma skin cancer was the commonest diagnosis, at just over one third of all cases'***

A national breast screening programme and a pilot screening programme for cervical cancer are being launched in Ireland. Population screening programmes are always expensive, as large numbers of people have to be screened, so the cost of detecting each case will be high. The Registry will provide data to help answer questions about the cost effectiveness of such programmes.

### 4 Time trends

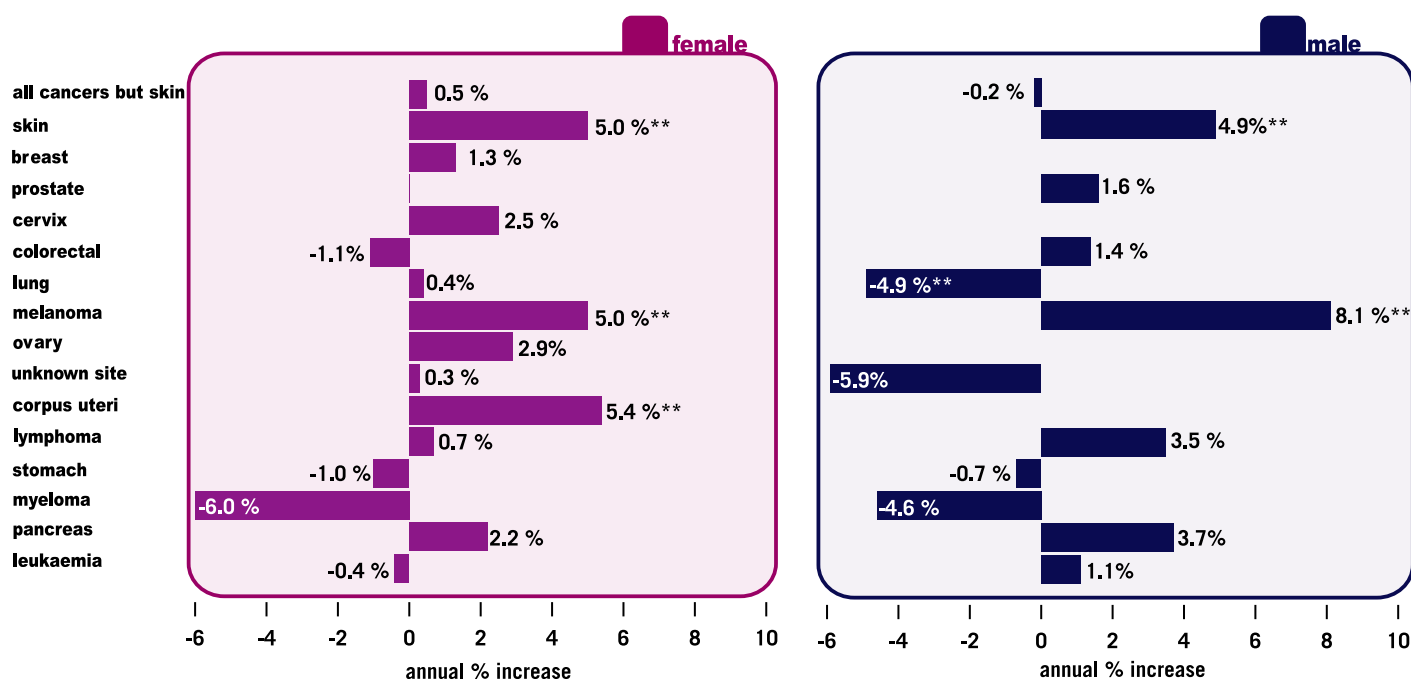
Between 1994 and 1997 overall cancer rates have been quite steady. Slight increases and decreases may be seen on a year on year basis but much of this is due to random fluctuation. Rates for a few cancers - non-melanoma and melanoma skin cancer and cancer of the womb (corpus uteri)- have increased significantly, but we cannot yet tell if this is due to screening or is a true increase in numbers. Cancer of the lung has decreased significantly in men but not in women.

Time trend information is important in assessing the way that different cancers are responding to changing risks, the introduction of screening programmes and the effects of the National Cancer Strategy in achieving reductions in cancer cases and deaths. The Registry is carrying out a major survey of trends in cancer death rates since the 1950s.

Table 2. Cases 1994 -1997

	female cases per year				male cases per year			
	1994	1995	1996	1997	1994	1995	1996	1997
all cancers but skin	6945	6670	7042	7158	6404	6280	6434	6476
skin	3165	3300	3544	3746	3422	3589	3845	4070
breast	1595	1596	1689	1715	14	8	17	16
prostate					1069	1112	1156	1133
cervix	902	826	1017	965				
colorectal	826	793	749	837	1034	989	1042	1069
lung	496	486	495	511	1048	947	963	909
melanoma	323	331	334	381	175	168	188	228
ovary	289	336	330	337				
unknown site	322	347	339	349	390	374	321	341
corpus uteri	186	214	221	223				
lymphoma	221	196	212	232	242	228	251	265
stomach	179	183	176	175	304	295	308	301
myeloma	202	149	151	164	204	182	193	178
pancreas	166	148	171	169	160	143	159	173
leukaemia	153	113	138	144	180	203	189	195

Figure 3. Annual percentage change in age-standardised incidence rate, 1994 to 1997



## 5 International comparisons

The table below shows the number of new cases for all malignant tumours (see section 8) in 22 European countries for 1995, compared to Irish data for 1997. The countries are ranked in descending order of overall cancer incidence, and the figures have been corrected ('standardised') for differences in the age structures of different countries. Cancer incidence in Ireland is at about the midpoint of the European incidence rates, a little above average for women and a little below for men. The overall incidence was lower than that found in Scotland and Northern Ireland, but higher than for England. The incidence of colorectal cancer in men was quite high, ranking fourth of 23, while lung cancer incidence in women ranked sixth. Lung cancer incidence in men was one of the lowest in Europe.

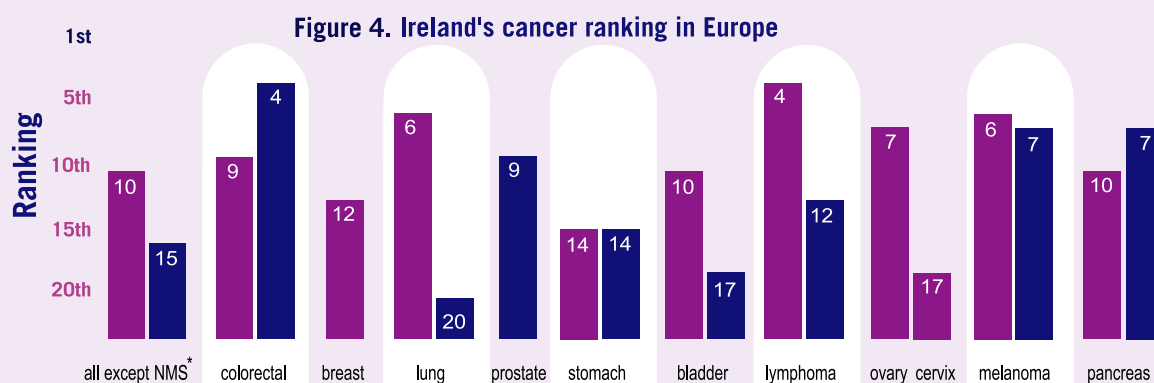
When making European comparisons it is important to recognise that there are many complex reasons why the data may be difficult to compare. Nevertheless, if we want to improve our cancer services we must do everything we can to understand differences in incidence between ourselves and other countries.

**Table 3. Cancer incidence in Europe.**

**Age-standardised incidence rates per 100,000 persons per year.**

\*all cancers except non-melanoma skin cancer

female male



Scotland	374	465	43	62	108	51	107	67	11	23	12	36	13	19	16	12	13	9	7	10
Iceland	397	434	40	42	103	50	56	131	8	17	8	31	12	18	21	9	12	8	10	11
Czech Rep	326	463	45	81	74	18	102	50	13	27	7	28	9	12	20	21	11	11	10	16
Denmark	395	386	44	54	111	41	70	43	5	12	5	19	11	17	22	18	18	15	9	10
Italy	331	449	41	67	110	20	94	43	13	36	4	22	14	17	10	11	4	10	7	10
Netherlands	331	445	43	57	112	26	96	86	8	19	5	25	12	18	16	9	14	10	8	11
N. Ireland	344	411	48	66	104	33	73	61	8	22	7	19	12	21	19	10	12	11	6	8
Switzerland	312	423	38	51	111	21	72	92	7	14	5	23	12	20	14	5	15	20	7	7
Austria	307	428	39	63	87	18	70	88	15	27	7	29	9	11	18	13	8	9	10	14
Germany	301	425	41	58	94	21	88	70	9	23	6	23	11	15	13	13	7	8	9	11
Norway	328	393	51	62	88	22	52	93	9	17	8	33	7	9	18	16	22	21	9	11
France	274	438	37	60	100	9	64	88	7	16	4	28	12	19	11	12	8	7	4	7
Ireland	319	394	40	64	95	27	63	71	9	19	6	22	12	15	18	10	13	9	8	11
Slovakia	272	440	35	64	56	10	103	39	14	32	5	21	8	11	15	22	7	6	8	14
Spain	279	428	37	62	92	7	70	53	9	20	8	46	9	23	14	11	8	7	6	9
Finland	294	386	28	39	100	12	65	100	10	19	5	24	14	20	1	6	8	10	9	13
Estonia	251	427	29	47	54	12	110	47	22	47	5	21	8	12	15	19	8	8	7	17
Sweden	328	346	34	45	104	18	31	96	7	13	7	24	11	17	20	9	15	15	8	9
Malta	297	360	38	38	89	8	76	44	7	23	5	36	12	10	21	9	4	3	7	12
Slovenia	265	391	31	51	68	14	96	36	15	34	3	18	8	11	16	20	8	8	6	11
England	300	329	30	44	102	27	61	54	6	16	7	25	11	16	17	10	10	7	6	8
Poland	222	348	22	33	47	14	105	25	12	30	3	24	7	9	14	18	3	4	8	11
Bulgaria	203	244	23	34	60	8	59	19	11	22	3	15	3	6	14	18	2	3	5	9

### 6 Treatments\*

Most patients (82%) had cancer-directed treatment in the initial phase of their disease. Excluding non-melanoma skin cancers, 54% of cancers were treated surgically, 16% with chemotherapy and 15% with radiotherapy. Radiotherapy and chemotherapy were almost always administered with another treatment type. Some cancers are best treated with surgery; others respond to radiation or chemotherapy, and, in many cases, combinations of different treatments are needed. The National Cancer Strategy in Ireland aims to organise cancer treatment so that high quality, appropriate and effective treatments are available to everybody irrespective of geography. The Registry is at present undertaking a study of cancer treatment in Ireland.

**Table 4. Treatments**

cases		surgery**		chemotherapy		hormone		radiotherapy		other***	
		total	alone	total	alone	total	alone	total	alone	total	all treatments
<b>all cancers</b>	21450 cancers	14251	11508	2254	812	1367	315	2526	1157	1281	17677
	% of total	66%	54%	11%	4%	6%	1%	12%	5%	6%	82%
<b>all but NMS</b>	13634 cancers	7371	4765	2232	792	1366	314	1981	705	1160	10250
	% of total	54%	35%	16%	6%	10%	2%	15%	5%	9%	75%
<b>skin</b>	7816 cancers	6880	6743	22	20	1	1	545	452	121	7427
	% of total	88%	86%	0%	0%	0%	0%	7%	6%	2%	95%
<b>breast</b>	1731 cancers	1450	258	524	28	907	87	544	11	107	1647
	% of total	84%	15%	30%	2%	52%	5%	31%	1%	6%	95%
<b>lung</b>	1420 cancers	197	157	220	149	4	3	372	282	47	723
	% of total	14%	11%	15%	10%	0%	0%	26%	20%	3%	51%
<b>colorectal</b>	1906 cancers	1525	1095	390	14	4	1	150	18	137	1666
	% of total	80%	57%	20%	1%	0%	0%	8%	1%	7%	87%
<b>prostate</b>	1133 cancers	651	446	7	2	395	203	43	16	45	907
	% of total	57%	39%	1%	0%	35%	18%	4%	1%	4%	80%
<b>cervix</b>	965 cancers	676	639	11	1	1	1	76	37	95	807
	% of total	70%	66%	1%	0%	0%	0%	8%	4%	10%	84%
<b>melanoma</b>	661 cancers	623	568	10	3	1	0	14	4	55	639
	% of total	94%	86%	2%	0%	0%	0%	2%	1%	8%	97%
<b>lymphoma</b>	497 cancers	95	35	302	222	2	1	63	37	19	388
	% of total	19%	7%	61%	45%	0%	0%	13%	7%	4%	78%
<b>stomach</b>	476 cancers	213	190	40	15	2	1	14	5	62	294
	% of total	45%	40%	8%	3%	0%	0%	3%	1%	13%	62%
<b>bladder</b>	474 cancers	393	339	26	5	3	0	28	6	18	412
	% of total	83%	72%	5%	1%	1%	0%	6%	1%	4%	87%
<b>myeloma etc.</b>	342 cancers	1	0	125	99	3	2	38	13	22	161
	% of total	0%	0%	37%	29%	1%	1%	11%	4%	6%	47%
<b>pancreas</b>	342 cancers	33	14	24	10	3	0	18	5	152	190
	% of total	10%	4%	7%	3%	1%	0%	5%	1%	44%	56%
<b>leukaemia</b>	339 cancers	3	2	155	141	4	3	4	1	30	181
	% of total	1%	1%	46%	42%	1%	1%	1%	0%	9%	53%
<b>ovary</b>	337 cancers	232	111	157	28	5	2	5	1	28	286
	% of total	69%	33%	47%	8%	1%	1%	1%	0%	8%	85%

\* Treatments are registered only if administered or planned in the first four months after diagnosis; treatment for recurrence is not registered.

\*\* Only that directed at reducing tumour bulk; other surgery is registered as "other treatment"

\*\*\* Excludes symptomatic treatments

7 Relative Survival

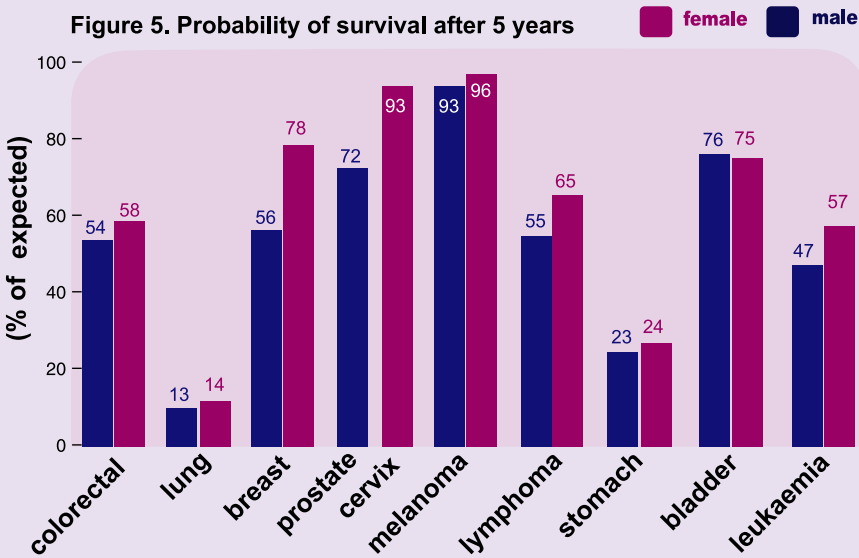
When people are treated for cancer one of the things uppermost in their minds is their chance of survival. Five-year relative survival is an estimate of the proportion of patients who will die of their disease in the five years after diagnosis. In Ireland, survival was generally better for women than for men. Several factors influence cancer survival: some cancers are much more difficult to cure than others; and for most, how far the cancer has progressed at diagnosis (early stage) is important. Patient awareness of early warning signs; attendance at screening programmes; early referral by GPs and appropriate early diagnosis and treatment by teams specialised in cancer treatment are all effective in improving survival.

Relative survival is used as an important benchmark to measure how effective are preventative, diagnostic and treatment services for cancer. It is important to know how we are performing in relation to other countries particularly in Europe and the USA. To this end Ireland is taking part in the EUROCARE 3 project, which will compare our cancer survival with 22 other countries in Europe, and the CONCORD study, which will compare survival in Europe and North America.

*'In Ireland, survival was generally better for women than for men.'*

Table 5.

Five-year relative survival for the commoner cancers



		probability of survival (% of expected)				
years after diagnosis		1	2	3	4	5
colorectal	male	72	63	58	56	54
	female	73	64	60	58	58
lung	male	26	17	14	14	13
	female	27	18	16	16	14
breast	male	86	72	66	68	56
	female	93	88	84	80	78
prostate	male	88	80	75	73	72
	female	97	95	94	94	93
melanoma	male	94	90	88	90	93
	female	98	97	95	95	96
lymphoma	male	73	64	61	59	55
	female	76	69	65	65	65
stomach	male	35	27	23	22	23
	female	37	29	26	25	24
bladder	male	85	80	78	76	76
	female	78	74	70	71	75
leukaemia	male	69	60	55	52	47
	female	71	64	59	57	57



The table on this and the following page lists the number of cases and deaths from cancer for 1997. While, in the rest of this summary, we have given figures for all the cancers in a particular part of the body (e.g. breast, lung), the system of classifying the cancers in the table below uses the International Classification of Diseases (ICD10) which gives extra information on the cancer type. In this system cancers are classified not only by site in the body, but also as "malignant" (C00 to C96), "in situ" (D00 to D09), "benign" (D10 to D36) or "uncertain whether benign or malignant" (D37 to D50).

## Cases and deaths 1997. By ICD10 site code and sex

Site of cancer	ICD 10 code	both sexes						males						females					
		cases	% of total	per 100,000	deaths	% of total	per 100,000	cases	% of total	per 100,000	deaths	% of total	per 100,000	cases	% of total	per 100,000	deaths	% of total	per 100,000
lip	C00	41	0.2%	1.12	8	0.1%	0.22	33	0.3%	1.82	8	0.2%	0.44	8	0.1%	0.44	0	0.0%	0.00
base of tongue	C01	22	0.1%	0.60	2	0.0%	0.05	19	0.2%	1.05	2	0.0%	0.11	3	0.0%	0.16	0	0.0%	0.00
other tongue	C02	32	0.1%	0.88	47	0.6%	1.29	19	0.2%	1.05	38	0.9%	2.10	13	0.1%	0.71	9	0.3%	0.49
gum	C03	1	0.0%	0.03	0	0.0%	0.00	1	0.0%	0.06	0	0.0%	0.00	0	0.0%	0.00	0	0.0%	0.00
floor of mouth	C04	23	0.1%	0.63	8	0.1%	0.22	17	0.2%	0.94	7	0.2%	0.39	6	0.1%	0.33	1	0.0%	0.05
palate	C05	11	0.1%	0.30	4	0.1%	0.11	6	0.1%	0.33	3	0.1%	0.17	5	0.0%	0.27	1	0.0%	0.05
other mouth	C06	22	0.1%	0.60	12	0.2%	0.33	13	0.1%	0.72	8	0.2%	0.44	9	0.1%	0.49	4	0.1%	0.22
parotid	C07	26	0.1%	0.71	14	0.2%	0.38	19	0.2%	1.05	11	0.3%	0.61	7	0.1%	0.38	3	0.1%	0.16
other salivary	C08	7	0.0%	0.19	3	0.0%	0.08	4	0.0%	0.22	2	0.0%	0.11	3	0.0%	0.16	1	0.0%	0.05
tonsil	C09	16	0.1%	0.44	6	0.1%	0.16	13	0.1%	0.72	4	0.1%	0.22	3	0.0%	0.16	2	0.1%	0.11
oropharynx	C10	9	0.0%	0.25	5	0.1%	0.14	9	0.1%	0.50	5	0.1%	0.28	0	0.0%	0.00	0	0.0%	0.00
nasopharynx	C11	11	0.1%	0.30	5	0.1%	0.14	10	0.1%	0.55	2	0.0%	0.11	1	0.0%	0.05	3	0.1%	0.16
pyriform	C12	30	0.1%	0.82	2	0.0%	0.05	21	0.2%	1.16	2	0.0%	0.11	9	0.1%	0.49	0	0.0%	0.00
hypopharynx	C13	7	0.0%	0.19	9	0.1%	0.25	4	0.0%	0.22	2	0.0%	0.11	3	0.0%	0.16	7	0.2%	0.38
other mouth/pharynx	C14	14	0.1%	0.38	15	0.2%	0.41	13	0.1%	0.72	13	0.3%	0.72	1	0.0%	0.05	2	0.1%	0.11
oesophagus	C15	294	1.4%	8.06	311	4.1%	8.53	195	1.8%	10.78	204	5.1%	11.27	99	0.9%	5.39	107	3.0%	5.83
stomach	C16	470	2.2%	12.89	374	5.0%	10.26	297	2.8%	16.41	233	5.8%	12.88	173	1.6%	9.42	141	4.0%	7.68
small intestine	C17	32	0.1%	0.88	21	0.3%	0.58	22	0.2%	1.22	11	0.3%	0.61	10	0.1%	0.54	10	0.3%	0.54
colon	C18	1094	5.1%	30.00	726	9.6%	19.91	569	5.4%	31.44	384	9.6%	21.22	525	4.8%	28.59	342	9.7%	18.62
rectosigmoid	C19	140	0.7%	3.84	34	0.5%	0.93	85	0.8%	4.70	17	0.4%	0.94	55	0.5%	2.99	17	0.5%	0.93
rectum	C20	528	2.5%	14.48	204	2.7%	5.59	346	3.3%	19.12	123	3.1%	6.80	182	1.7%	9.91	81	2.3%	4.41
anus	C21	22	0.1%	0.60	6	0.1%	0.16	9	0.1%	0.50	3	0.1%	0.17	13	0.1%	0.71	3	0.1%	0.16
liver	C22	60	0.3%	1.65	120	1.6%	3.29	37	0.4%	2.04	63	1.6%	3.48	23	0.2%	1.25	57	1.6%	3.10
gallbladder	C23	53	0.2%	1.45	24	0.3%	0.66	13	0.1%	0.72	5	0.1%	0.28	40	0.4%	2.18	19	0.5%	1.03
other biliary	C24	70	0.3%	1.92	21	0.3%	0.58	29	0.3%	1.60	7	0.2%	0.39	41	0.4%	2.23	14	0.4%	0.76
pancreas	C25	342	1.6%	9.38	364	4.8%	9.98	173	1.6%	9.56	184	4.6%	10.17	169	1.5%	9.20	180	5.1%	9.80
other digestive	C26	26	0.1%	0.71	171	2.3%	4.69	13	0.1%	0.72	87	2.2%	4.81	13	0.1%	0.71	84	2.4%	4.57
nasal cavity/middle ear	C30	10	0.0%	0.27	1	0.0%	0.03	4	0.0%	0.22	0	0.0%	0.00	6	0.1%	0.33	1	0.0%	0.05
sinuses	C31	16	0.1%	0.44	6	0.1%	0.16	11	0.1%	0.61	2	0.0%	0.11	5	0.0%	0.27	4	0.1%	0.22
larynx	C32	94	0.4%	2.58	66	0.9%	1.81	79	0.7%	4.37	57	1.4%	3.15	15	0.1%	0.82	9	0.3%	0.49
trachea	C33	2	0.0%	0.05	1	0.0%	0.03	2	0.0%	0.11	1	0.0%	0.06	0	0.0%	0.00	0	0.0%	0.00
lung	C34	1417	6.6%	38.86	1385	18.3%	37.99	908	8.6%	50.18	888	22.1%	49.07	509	4.7%	27.71	497	14.0%	27.06
thymus	C37	7	0.0%	0.19	0	0.0%	0.00	6	0.1%	0.33	0	0.0%	0.00	1	0.0%	0.05	0	0.0%	0.00
mediastinum	C38	8	0.0%	0.22	19	0.3%	0.52	5	0.0%	0.28	16	0.4%	0.88	3	0.0%	0.16	3	0.1%	0.16
other chest	C39	0	0.0%	0.00	0	0.0%	0.00	0	0.0%	0.00	0	0.0%	0.00	0	0.0%	0.00	0	0.0%	0.00
bones, joints of limbs	C40	26	0.1%	0.71	7	0.1%	0.19	14	0.1%	0.77	2	0.0%	0.11	12	0.1%	0.65	5	0.1%	0.27
bones, joints head and trunk	C41	12	0.1%	0.33	33	0.4%	0.91	10	0.1%	0.55	15	0.4%	0.83	2	0.0%	0.11	18	0.5%	0.98
melanoma skin	C43	406	1.9%	11.14	68	0.9%	1.86	167	1.6%	9.23	35	0.9%	1.93	239	2.2%	13.01	33	0.9%	1.80
non-melanoma skin	C44	6703	31.2%	183.84	33	0.4%	0.91	3695	35.0%	204.19	21	0.5%	1.16	3008	27.6%	163.78	12	0.3%	0.65
mesothelioma	C45	23	0.1%	0.63	0	0.0%	0.00	19	0.2%	1.05	0	0.0%	0.00	4	0.0%	0.22	0	0.0%	0.00
Kaposi's sarcoma	C46	2	0.0%	0.05	0	0.0%	0.00	2	0.0%	0.11	0	0.0%	0.00	0	0.0%	0.00	0	0.0%	0.00
peripheral nerves	C47	6	0.0%	0.16	0	0.0%	0.00	4	0.0%	0.22	0	0.0%	0.00	2	0.0%	0.11	0	0.0%	0.00
peritoneum	C48	14	0.1%	0.38	10	0.1%	0.27	5	0.0%	0.28	7	0.2%	0.39	9	0.1%	0.49	3	0.1%	0.16
connective tissues	C49	67	0.3%	1.84	33	0.4%	0.91	36	0.3%	1.99	18	0.4%	0.99	31	0.3%	1.69	15	0.4%	0.82
breast	C50	1637	7.6%	44.90	637	8.4%	17.47	17	0.2%	0.94	3	0.1%	0.17	1620	14.9%	88.21	634	17.9%	34.52
vulva	C51	25	0.1%	0.69	13	0.2%	0.36	0	0.0%	0.00	0	0.0%	0.00	25	0.2%	1.36	13	0.4%	0.71
vagina	C52	5	0.0%	0.14	3	0.0%	0.08	0	0.0%	0.00	0	0.0%	0.00	5	0.0%	0.27	3	0.1%	0.16

&lt; continued on next page &gt;

## Cases and deaths 1997. By ICD10 site code and sex



< continued from previous page >	ICD 10 code	both sexes						males						females					
		cases	% of total	per 100,000	deaths	% of total	per 100,000	cases	% of total	per 100,000	deaths	% of total	per 100,000	cases	% of total	per 100,000	deaths	% of total	per 100,000
cervix	C53	159	0.7%	4.36	82	1.1%	2.25	0	0.0%	0.00	0	0.0%	0.00	159	1.5%	8.66	82	2.3%	4.46
corpus uteri	C54	218	1.0%	5.98	40	0.5%	1.10	0	0.0%	0.00	0	0.0%	0.00	218	2.0%	11.87	40	1.1%	2.18
uterus nos	C55	11	0.1%	0.30	14	0.2%	0.38	0	0.0%	0.00	0	0.0%	0.00	11	0.1%	0.60	14	0.4%	0.76
ovary	C56	306	1.4%	8.39	259	3.4%	7.10	0	0.0%	0.00	0	0.0%	0.00	306	2.8%	16.66	259	7.3%	14.10
other female genital	C57	4	0.0%	0.11	4	0.1%	0.11	0	0.0%	0.00	0	0.0%	0.00	4	0.0%	0.22	4	0.1%	0.22
placenta	C58	0	0.0%	0.00	0	0.0%	0.00	0	0.0%	0.00	0	0.0%	0.00	0	0.0%	0.00	0	0.0%	0.00
penis	C60	17	0.1%	0.47	5	0.1%	0.14	17	0.2%	0.94	5	0.1%	0.28	0	0.0%	0.00	0	0.0%	0.00
prostate	C61	1130	5.3%	30.99	535	7.1%	14.67	1130	10.7%	62.44	535	13.3%	29.56	0	0.0%	0.00	0	0.0%	0.00
testis	C62	83	0.4%	2.28	5	0.1%	0.14	83	0.8%	4.59	5	0.1%	0.28	0	0.0%	0.00	0	0.0%	0.00
other male genital	C63	0	0.0%	0.00	0	0.0%	0.00	0	0.0%	0.00	0	0.0%	0.00	0	0.0%	0.00	0	0.0%	0.00
kidney	C64	256	1.2%	7.02	146	1.9%	4.00	174	1.6%	9.62	98	2.4%	5.42	82	0.8%	4.46	48	1.4%	2.61
renal pelvis	C65	11	0.1%	0.30	0	0.0%	0.00	5	0.0%	0.28	0	0.0%	0.00	6	0.1%	0.33	0	0.0%	0.00
ureter	C66	13	0.1%	0.36	3	0.0%	0.08	11	0.1%	0.61	2	0.0%	0.11	2	0.0%	0.11	1	0.0%	0.05
bladder	C67	454	2.1%	12.45	173	2.3%	4.74	332	3.1%	18.35	113	2.8%	6.24	122	1.1%	6.64	60	1.7%	3.27
other urinary	C68	7	0.0%	0.19	0	0.0%	0.00	6	0.1%	0.33	0	0.0%	0.00	1	0.0%	0.05	0	0.0%	0.00
eye	C69	40	0.2%	1.10	17	0.2%	0.47	21	0.2%	1.16	7	0.2%	0.39	19	0.2%	1.03	10	0.3%	0.54
meninges	C70	4	0.0%	0.11	1	0.0%	0.03	1	0.0%	0.06	0	0.0%	0.00	3	0.0%	0.16	1	0.0%	0.05
brain	C71	247	1.2%	6.77	212	2.8%	5.81	145	1.4%	8.01	119	3.0%	6.58	102	0.9%	5.55	93	2.6%	5.06
spinal cord	C72	6	0.0%	0.16	1	0.0%	0.03	3	0.0%	0.17	1	0.0%	0.06	3	0.0%	0.16	0	0.0%	0.00
thyroid	C73	57	0.3%	1.56	23	0.3%	0.63	23	0.2%	1.27	8	0.2%	0.44	34	0.3%	1.85	15	0.4%	0.82
adrenal	C74	12	0.1%	0.33	7	0.1%	0.19	5	0.0%	0.28	4	0.1%	0.22	7	0.1%	0.38	3	0.1%	0.16
other endocrine	C75	7	0.0%	0.19	5	0.1%	0.14	4	0.0%	0.22	3	0.1%	0.17	3	0.0%	0.16	2	0.1%	0.11
ill-defined site	C76	32	0.1%	0.88	96	1.3%	2.63	16	0.2%	0.88	38	0.9%	2.10	16	0.1%	0.87	58	1.6%	3.16
lymph nodes	C77	3	0.0%	0.08	0	0.0%	0.00	1	0.0%	0.06	0	0.0%	0.00	2	0.0%	0.11	0	0.0%	0.00
unknown primary site	C80	682	3.2%	18.7	441	5.8%	12.09	338	3.2%	18.68	227	5.7%	12.54	344	3.2%	18.73	214	6.0%	11.65
Hodgkin's disease	C81	84	0.4%	2.30	26	0.3%	0.71	43	0.4%	2.38	14	0.3%	0.77	41	0.4%	2.23	12	0.3%	0.65
follicular non-Hodgkin's lymphoma	C82	61	0.3%	1.67	0	0.0%	0.00	36	0.3%	1.99	0	0.0%	0.00	25	0.2%	1.36	0	0.0%	0.00
diffuse non-Hodgkin's lymphoma	C83	149	0.7%	4.09	2	0.0%	0.05	81	0.8%	4.48	2	0.0%	0.11	68	0.6%	3.70	0	0.0%	0.00
peripheral and cutaneous T cell lymphoma	C84	14	0.1%	0.38	0	0.0%	0.00	9	0.1%	0.50	0	0.0%	0.00	5	0.0%	0.27	0	0.0%	0.00
other and unspecified NHL	C85	184	0.9%	5.05	190	2.5%	5.21	93	0.9%	5.14	101	2.5%	5.58	91	0.8%	4.95	89	2.5%	4.85
malignant immunoproliferative disease	C88	4	0.0%	0.11	0	0.0%	0.00	3	0.0%	0.17	0	0.0%	0.00	1	0.0%	0.05	0	0.0%	0.00
multiple myeloma	C90	171	0.8%	4.69	137	1.8%	3.76	90	0.9%	4.97	74	1.8%	4.09	81	0.7%	4.41	63	1.8%	3.43
lymphoid leukaemia	C91	171	0.8%	4.69	84	1.1%	2.30	103	1.0%	5.69	50	1.2%	2.76	68	0.6%	3.70	34	1.0%	1.85
myeloid leukaemia	C92	119	0.6%	3.26	79	1.0%	2.17	63	0.6%	3.48	43	1.1%	2.38	56	0.5%	3.05	36	1.0%	1.96
monocytic leukaemia	C93	5	0.0%	0.14	2	0.0%	0.05	4	0.0%	0.22	1	0.0%	0.06	1	0.0%	0.05	1	0.0%	0.05
other specified leukaemia	C94	12	0.1%	0.33	0	0.0%	0.00	6	0.1%	0.33	0	0.0%	0.00	6	0.1%	0.33	0	0.0%	0.00
unspecified leukaemia	C95	32	0.1%	0.88	50	0.7%	1.37	19	0.2%	1.05	31	0.8%	1.71	13	0.1%	0.71	19	0.5%	1.03
other lymphoid and haematopoietic	C96	5	0.0%	0.14	1	0.0%	0.03	3	0.0%	0.17	1	0.0%	0.00	2	0.0%	0.11	0	0.0%	0.00
in situ: oral cavity, oesophagus and stomach	D00	18	0.1%	0.49	0	0.0%	0.00	12	0.1%	0.66	0	0.0%	0.00	6	0.1%	0.33	0	0.0%	0.00
in situ: other digestive	D01	48	0.2%	1.32	0	0.0%	0.00	28	0.3%	1.55	0	0.0%	0.00	20	0.2%	1.09	0	0.0%	0.00
in situ: middle ear and respiratory	D02	19	0.1%	0.52	0	0.0%	0.00	13	0.1%	0.72	0	0.0%	0.00	6	0.1%	0.33	0	0.0%	0.00
in situ: melanoma	D03	211	1.0%	5.79	0	0.0%	0.00	65	0.6%	3.59	0	0.0%	0.00	146	1.3%	7.95	0	0.0%	0.00
in situ: carcinoma of skin	D04	1107	5.2%	30.36	0	0.0%	0.00	364	3.5%	20.12	0	0.0%	0.00	743	6.8%	40.46	0	0.0%	0.00
in situ: breast	D05	84	0.4%	2.30	0	0.0%	0.00	0	0.0%	0.00	0	0.0%	0.00	84	0.8%	4.57	0	0.0%	0.00
in situ: cervix	D06	806	3.8%	22.11	0	0.0%	0.00	0	0.0%	0.00	0	0.0%	0.00	806	7.4%	43.89	0	0.0%	0.00
in situ: other genital	D07	15	0.1%	0.41	0	0.0%	0.00	10	0.1%	0.55	0	0.0%	0.00	5	0.0%	0.27	0	0.0%	0.00
in situ: other sites	D09	18	0.1%	0.49	0	0.0%	0.00	12	0.1%	0.66	0	0.0%	0.00	6	0.1%	0.33	0	0.0%	0.00
all benign	D10-D36	112	0.5%	3.07	27	0.4%	0.74	39	0.4%	2.16	16	0.3%	0.87	73	0.7%	3.97	11	0.3%	0.61
all uncertain	D37-D48	359	1.6%	9.85	57	0.7%	1.56	162	1.5%	8.95	26	0.8%	1.42	197	1.8%	10.73	31	0.9%	1.71
all cancers	C00-D48	21450	100%	588.29	7555	100%	207.2	10546	100%	582.78	4017	100%	221.98	10904	100%	593.72	3538	100%	192.64